



State Route 1 Multi-Asset Roadway Rehabilitation Project

PROJECT MANAGER: KELLY MA

04-0Q130



Draft Environmental Document Stakeholder Discussion

MARCH 28, 2022

Introductions



Presentation Outline and Meeting Objectives

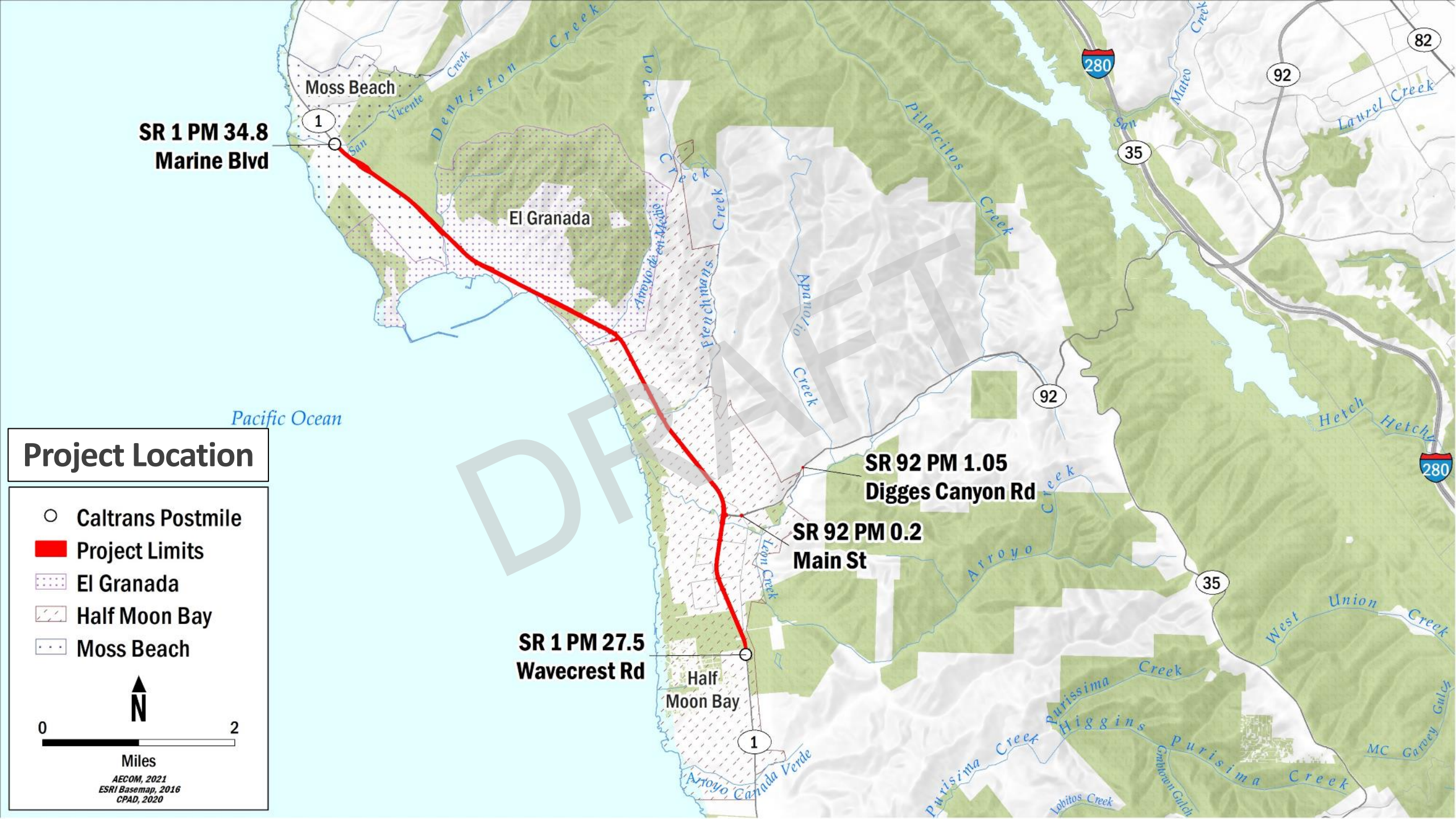
Presentation Outline

- Project location and scope
- Project Updates
- Discussion/Q&A

Meeting Objectives

- Continued Stakeholder awareness
- Outreach prior to public circulation of Draft Environmental Document
- Receive stakeholder input on project scope

DRAFT



**SR 1 PM 34.8
Marine Blvd**

Moss Beach

El Granada

Pacific Ocean

Project Location

- Caltrans Postmile
- Project Limits
- ▨ El Granada
- ▨ Half Moon Bay
- ▨ Moss Beach



Miles

AECOM, 2021
ESRI Basemap, 2016
CPAD, 2020

**SR 1 PM 27.5
Wavecrest Rd**

Half Moon Bay

**SR 92 PM 0.2
Main St**

**SR 92 PM 1.05
Digges Canyon Rd**

82

92

35

280

92

280

35

1

Arroyo Canada Verde

Purisima Creek

Higgins Creek

Purisima Creek

Lobitos Creek

Granada Gulch

West Union Creek

MC Garvey Gulch

Hetch Hetchy

Lawrel Creek

Pilarcitos Creek

Benchmans Creek

Apurto Creek

Arroyo de San Mateo

Locks

Denjiston Creek

San Vicente

Mareo Creek

Project Scope

- Rehabilitate roadway
- Upgrade guardrail
- Rehabilitate drainage systems
- Upgrade facilities to Americans with Disabilities Act (ADA) standards
- Incorporate bicycle improvements
- Meet Caltrans Complete Streets guidance
- Bus stop improvements
- Upgrade traffic management system (TMS) elements

Roadway Rehabilitation

Existing:



Proposed:



Recent Caltrans Highway 1 Project in Mendocino County

Existing pavement quality north of Miramar

Source: Google images

Guard Rail Locations – Existing & Proposed Conditions

Existing:



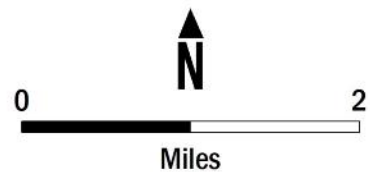
Proposed:



Photos courtesy of Google Images

Roadway Rehabilitation and Guard Rail Replacement

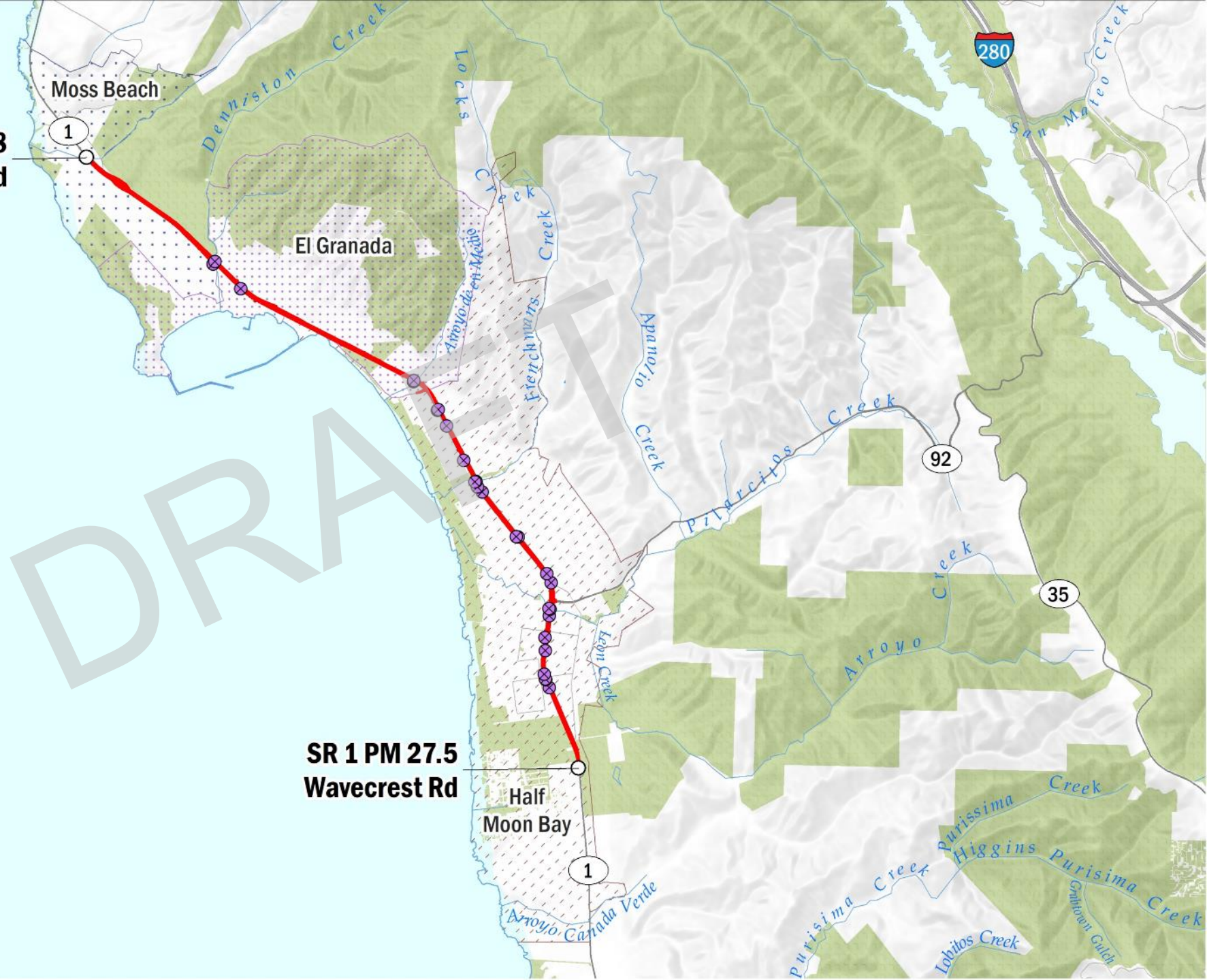
- ⊗ Guard Rail Replacement Location
- Caltrans Postmile
- █ Pavement Rehabilitation Limits
- ▤ El Granada
- ▨ Half Moon Bay
- ▧ Moss Beach



AECOM, 2021
ESRI Basemap, 2016
CPAD, 2020

SR 1 PM 34.8
Marine Blvd

SR 1 PM 27.5
Wavcrest Rd



Drainage System Rehabilitation

Culvert Camera Inspection



Robotic Culvert Inspection



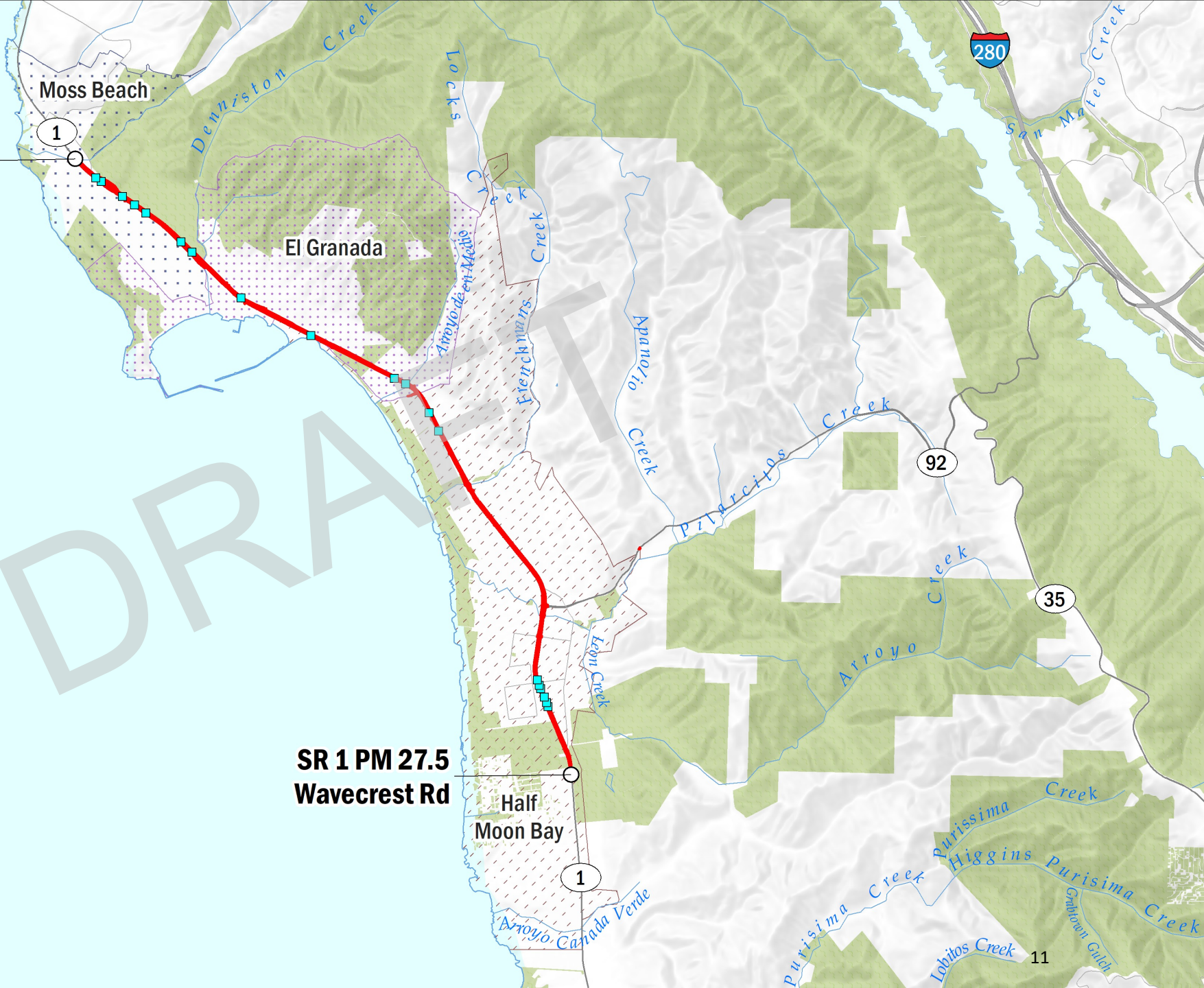
Drainage Culvert



Drainage Dike



DRAFT

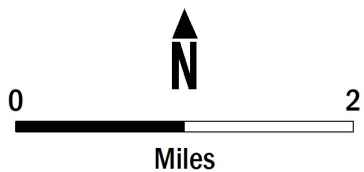


SR 1 PM 34.8
Marine Blvd

SR 1 PM 27.5
Wavecrest Rd

Drainage System Rehabilitation

- Drainage Facility
- Caltrans Postmile
- Pavement Rehabilitation Limits
- ▨ El Granada
- ▨ Half Moon Bay
- ▨ Moss Beach



AECOM, 2021
ESRI Basemap, 2016
CPAD, 2020

Bike, Pedestrian, Complete Street Improvements and ADA Upgrades



Existing curb at Highway 1/Capistrano Road



Existing crosswalks at Highway 1/Coronado Street

Bike, Pedestrian, Complete Street Improvements and ADA Upgrades



Example of an ADA-compliant curb ramp



Example of a striped crosswalk

Photo Credit: [Sergio Ruiz](#)

Bike, Pedestrian, Complete Street Improvements and ADA Upgrades



Example of a Class I Bike Path



Example of a Class II Bike Lane

Photo Credit: [Caltrans District 4 Bike Plan](#)

Bus Stop Improvements



Current sidewalk gap at Terrace Avenue bus stop



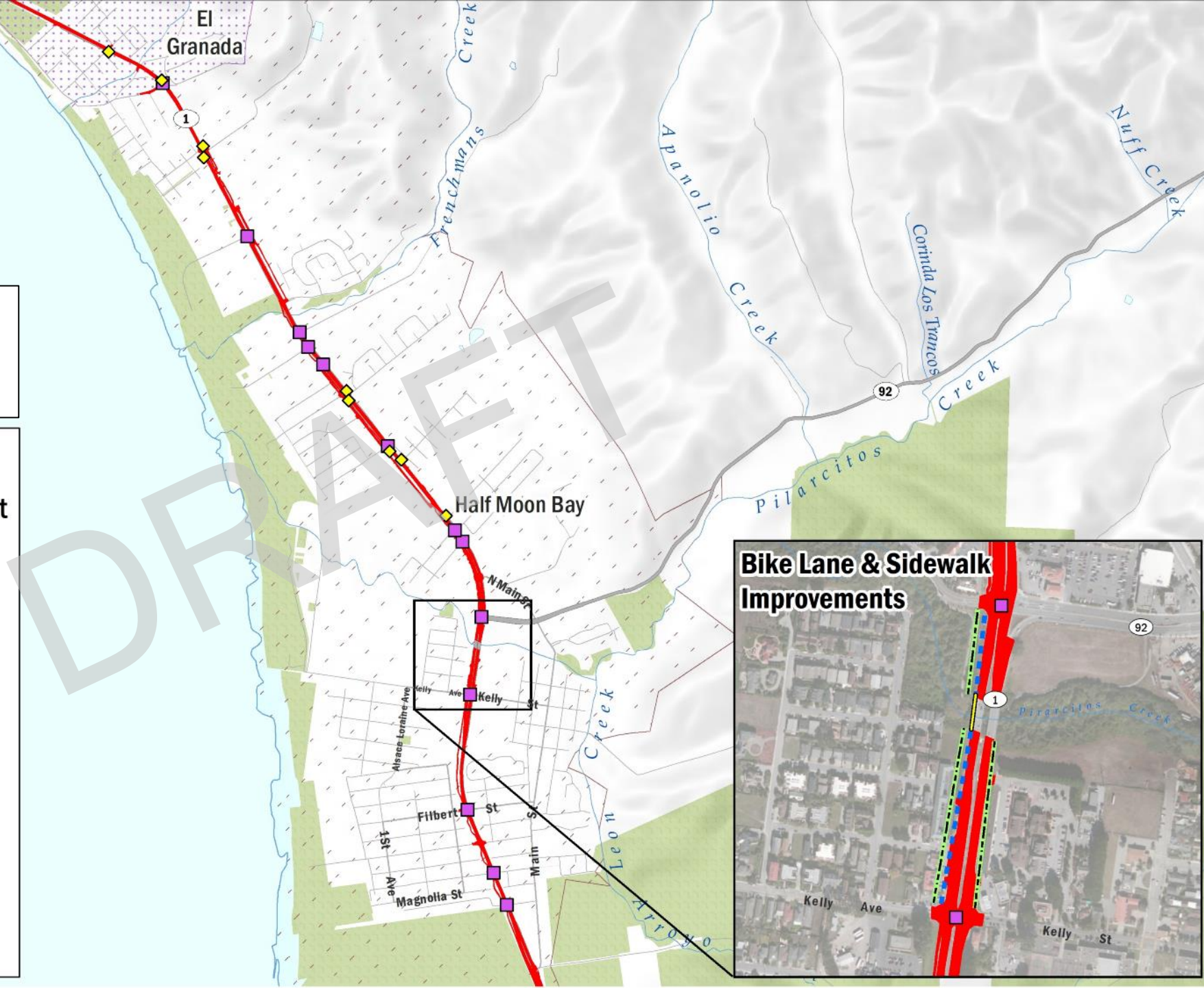
Example of SamTrans bus stop with sidewalk connections in HMB

Bike, Ped, and Complete Street Improvements

- ◆ Transit Stop Paving Location
- Complete Street Intersection Improvement
- Caltrans Postmile
- - - Class I Bike Path
- Class II Bike Lane
- · - Sidewalk
- Pavement Rehabilitation Limits
- ▨ El Granada
- ▨ Half Moon Bay



AECOM, 2021
ESRI Basemap, 2016
CPAD, 2020



Traffic Management System Elements



Traffic Monitoring System



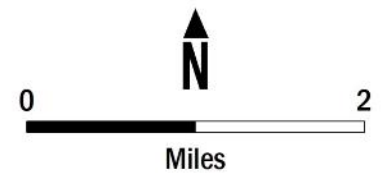
Fixed Intersection Camera/CCTV



Variable Message Sign (12' X 5')

Traffic Monitoring System Locations

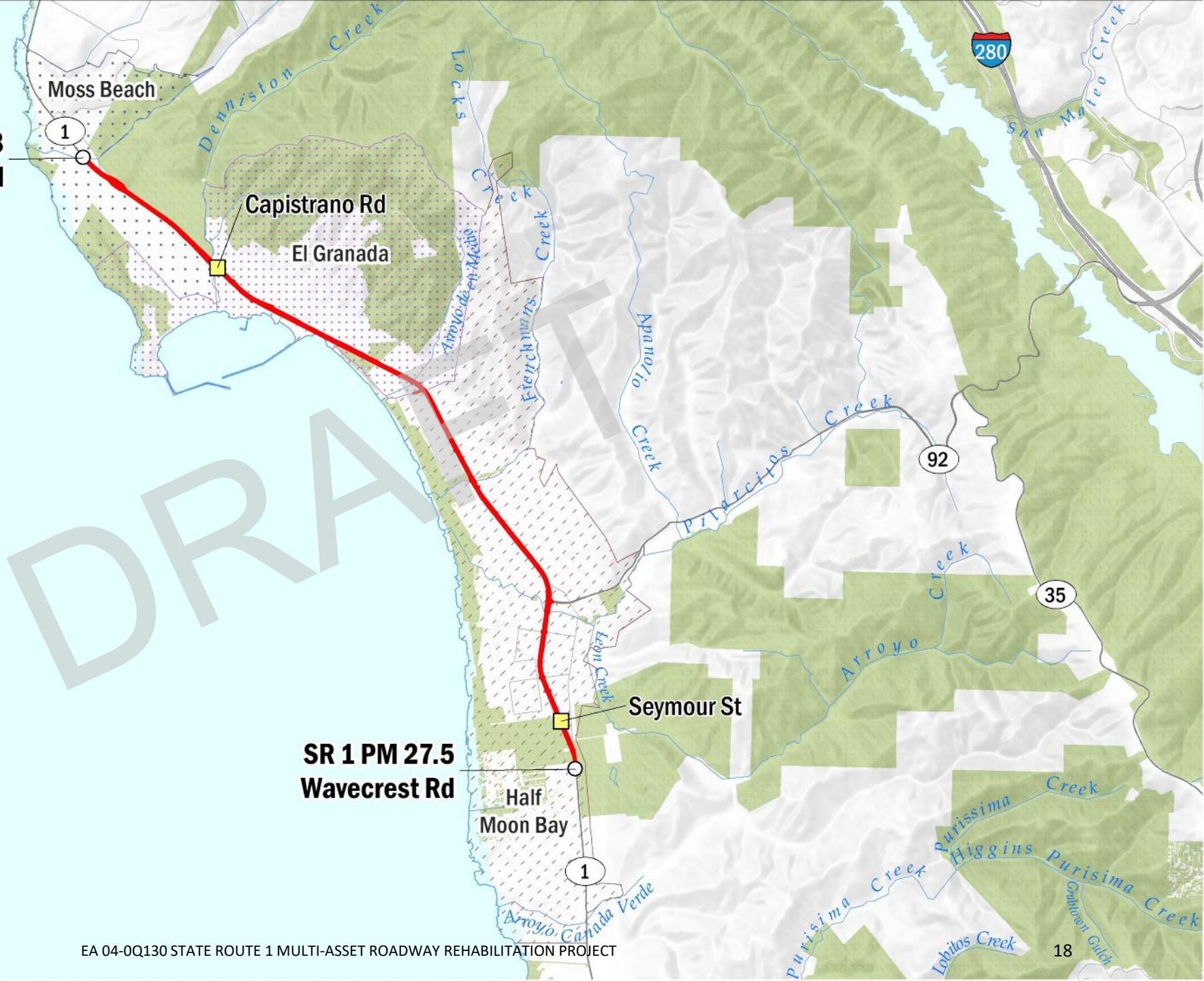
-  Traffic Monitoring System (TMS)
-  Caltrans Postmile
-  Pavement Rehabilitation Limits
-  El Granada
-  Half Moon Bay
-  Moss Beach



AECOM, 2021
ESRI Basemap, 2016
CPAD, 2020

SR 1 PM 34.8
Marine Blvd

SR 1 PM 27.5
Wavcrest Rd



Close Circuit Television (CCTV) Camera Locations

- ▲ Closed Circuit Television (CCTV) Camera
- Caltrans Postmile
- █ Pavement Rehabilitation Limits
- ▤ El Granada
- ▨ Half Moon Bay
- ▧ Moss Beach



Miles
AECOM, 2021
ESRI Basemap, 2016
CPAD, 2020

SR 1 PM 34.8
Marine Blvd

Capistrano Rd
El Granada

Medio Ave

SR 1 PM 27.5
Wavcrest Rd

Seymour St

Half
Moon Bay

Fixed Intersection Camera Locations

-  Fixed Intersection Camera
-  Caltrans Postmile
-  Pavement Rehabilitation Limits
-  El Granada
-  Half Moon Bay
-  Moss Beach



AECOM, 2021
ESRI Basemap, 2016
CPAD, 2020



Variable Message Sign Locations

- Variable Message Sign (VMS)
- Caltrans Postmile
- █ Pavement Rehabilitation Limits
- ▨ El Granada
- ▨ Half Moon Bay
- ▨ Moss Beach



AECOM, 2021
ESRI Base Map, 2018
CPAD, 2020

SR 1 PM 34.8
Marine Blvd

1

Moss Beach

El Granada

Miramar Dr SB

Mirada Rd NB

North Main St SB

South Main St NB

Digges Canyon Rd WB

SR 1 PM 27.5
Wavecrest Rd

Half
Moon Bay

1

Typical Rendering of VMS & Associated Elements



VMS Location 1 – Southbound SR 1 near Miramar Drive



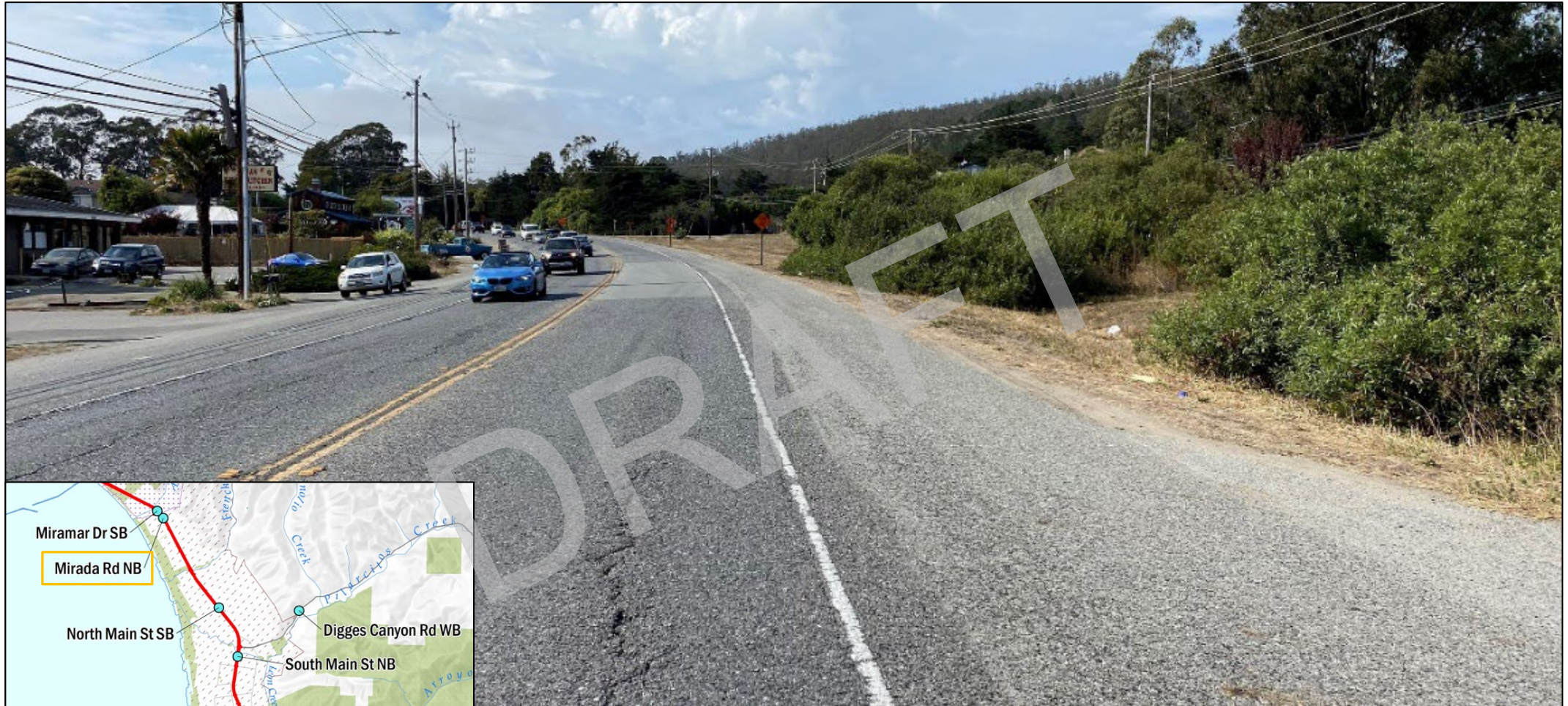
Existing conditions

VMS Location 1 – Southbound SR 1 near Miramar Drive



Simulation

VMS Location 2 – Northbound SR 1 near Mirada Rd



Existing conditions

VMS Location 2 – Northbound SR 1 near Mirada Rd



Simulation

VMS Location 3 – Southbound SR 1 near N Main St



Existing conditions

VMS Location 3 – Southbound SR 1 near N Main St



Simulation

VMS Location 4 – Northbound SR 1 near Main St



Existing conditions

VMS Location 4 – Northbound SR 1 near Main St



Simulation

VMS Location 5 – Westbound SR 92 near Diggs Canyon Rd



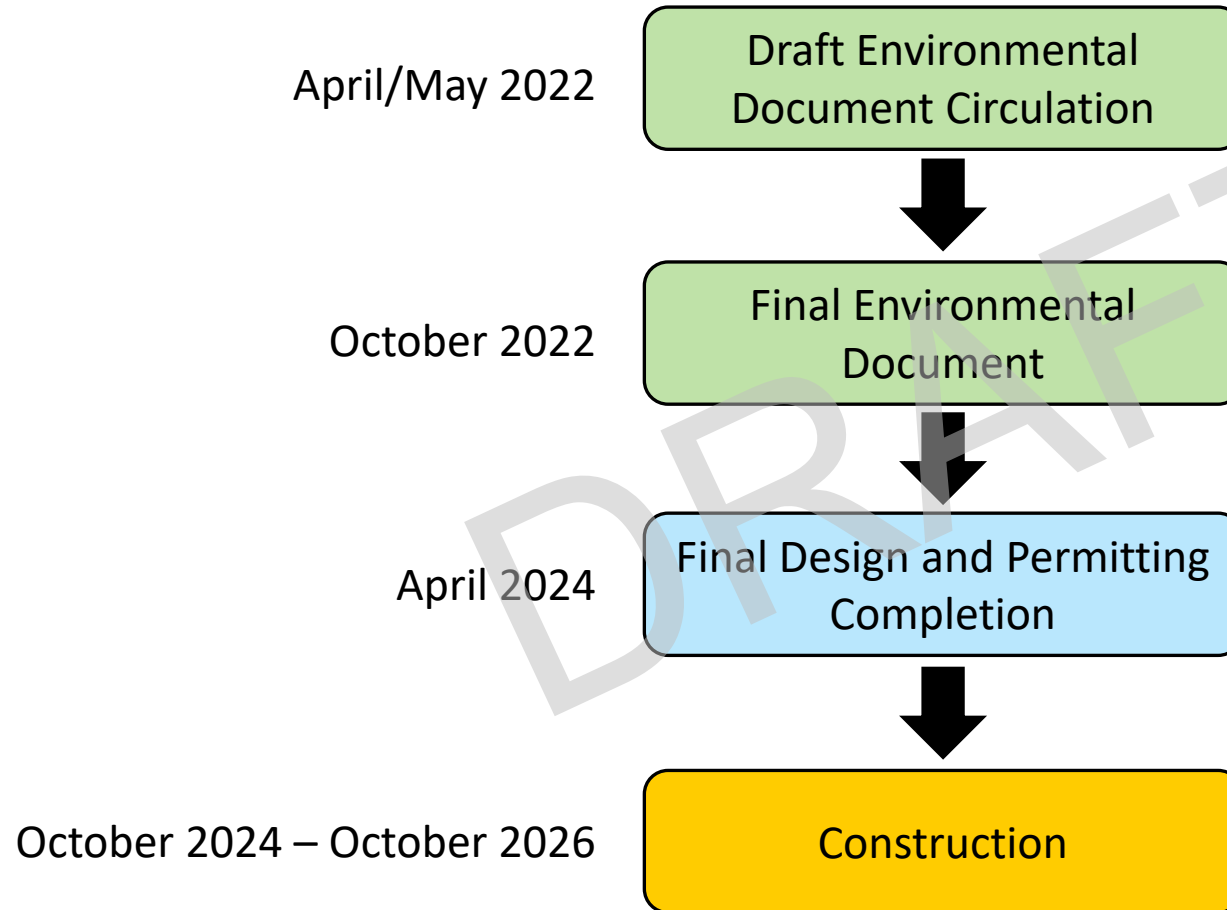
Existing conditions

VMS Location 5 – Westbound SR 92 near Diggs Canyon Rd



Simulation

Project Schedule



THANK YOU!

Q&A

DRAFT