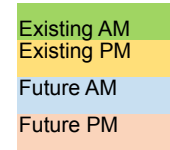


# Santa Cruz Avenue

## Critical 95<sup>th</sup> Percentile Queue Lengths

| Scenarios Analyzed  | Turning Movement | Campo Bello Ln/Alameda de las Pulgas/<br>Santa Cruz Ave |     |     | Alameda de las Pulgas/<br>Sharon Rd |     |     |
|---|------------------|---|-----|-----|-------------------------------------|-----|-----|
|   |                  | Road  | AM  | PM  | Road                                | AM  | PM  |
| <b>Existing</b>   | SEBT             | ADLP  | 227 | 107 |                                     |     |     |
|   | NWBT             | Santa Cruz  | 123 | 185 |                                     |     |     |
|   | NBT              |   |     |     | ADLP                                | 95  | 23  |
|   | SBT              |   |     |     | ADLP                                | 154 | 91  |
| <b>Existing plus Road Diet</b>  | SEBT             | ADLP  | 680 | 255 |                                     |     |     |
|   | NWBT             | Santa Cruz  | 282 | 566 |                                     |     |     |
|   | NBT              |   |     |     | ADLP                                | 212 | 491 |
|   | SBT              |   |     |     | ADLP                                | 513 | 225 |
| <b>Existing plus Diet plus Modified Y and Sharon Road Intersections</b>     | SEBT             | ADLP  | 743 | 267 |                                     |     |     |
|   | NWBT             | Santa Cruz  | 310 | 591 |                                     |     |     |
|   | NBT              |   |     |     | ADLP                                | 255 | 615 |
|   | SBT              |   |     |     | ADLP                                | 611 | 294 |
| <b>Horizon Year</b>   | SEBT             | ADLP  | 272 | 165 |                                     |     |     |
|   | NWBT             | Santa Cruz  | 169 | 237 |                                     |     |     |
|   | NBT              |   |     |     | ADLP                                | 122 | 195 |
|   | SBT              |   |     |     | ADLP                                | 200 | 377 |
| <b>Horizon Year plus Road Diet</b>  | SEBT             | ADLP  | 815 | 445 |                                     |     |     |
|   | NWBT             | Santa Cruz  | 449 | 776 |                                     |     |     |
|   | NBT              |   |     |     | ADLP                                | 303 | 670 |
|   | SBT              |   |     |     |                                     | 683 | 504 |
| <b>Horizon Year plus Diet plus Modified Y and Sharon Road Intersections</b> | SEBT             | ADLP  | 855 | 469 |                                     |     |     |
|   | NWBT             | Santa Cruz  | 488 | 800 |                                     |     |     |
|   | NBT              |   |     |     | ADLP                                | 342 | 863 |
|   | SBT              |   |     |     | ADLP                                | 798 | 561 |



**Notes**

- 95th percentile queue lengths presented above are measured in feet.
- Queues which exceed the provided capacity are noted in bold.

# Sharon RD and ADLP- Northbound AM Peak Hour-Critical 95<sup>th</sup> percentile queue lengths

Existing



Existing+Diet



Existing+Diet+Modification



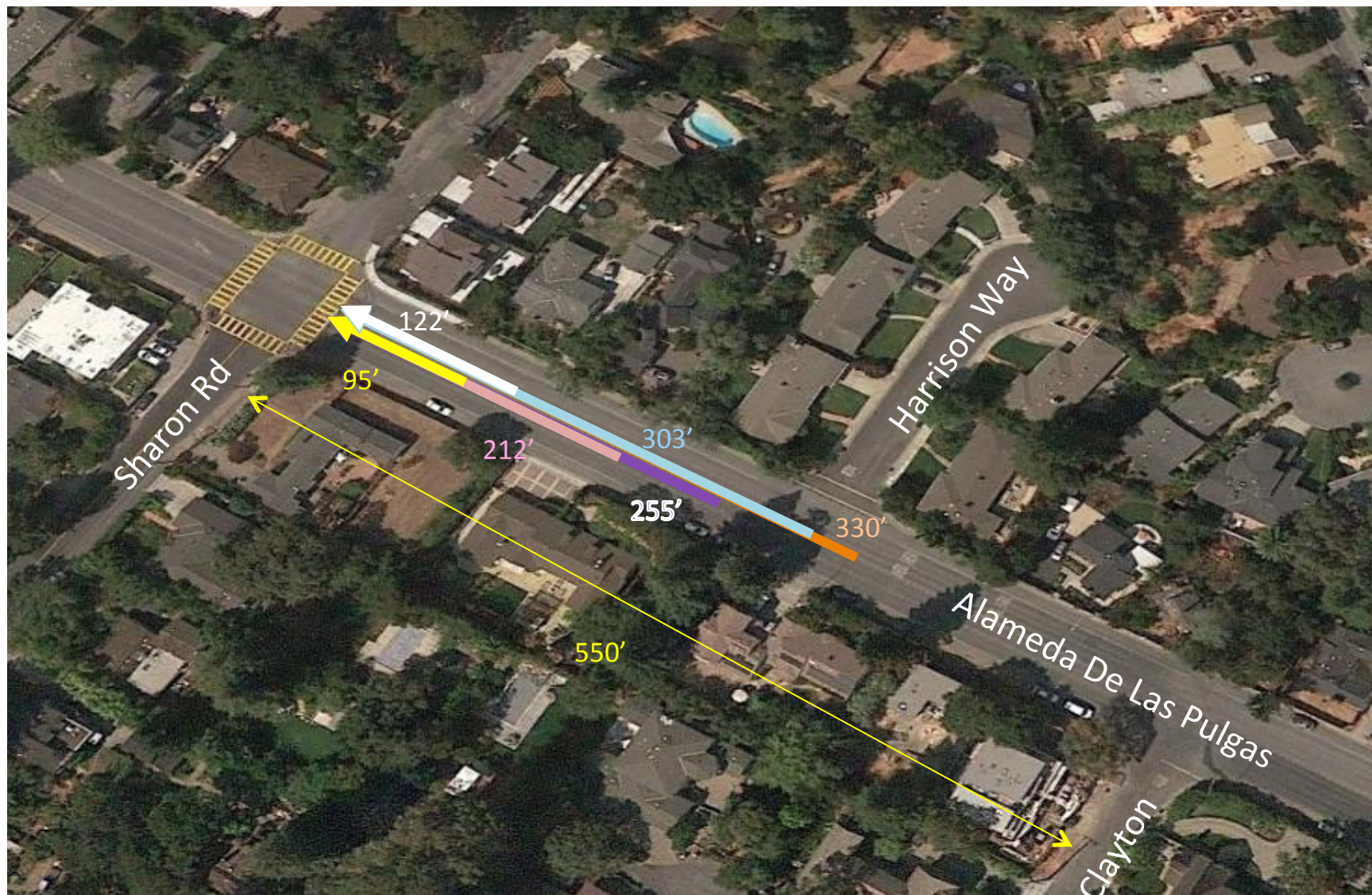
Horizon



Horizon+Diet



Horizon+Diet+Modification



# Sharon RD and ADLP- Northbound PM Peak Hour-Critical 95<sup>th</sup> percentile queue lengths

Existing



Existing+Diet



Existing+Diet+Modification



Horizon



Horizon+Diet



Horizon+Diet+Modification



# Sharon RD and ADLP- Southbound AM Peak Hour-Critical 95<sup>th</sup> percentile queue lengths

Existing   Existing+Diet   Existing+Diet+Modification   Horizon   Horizon+Diet   Horizon+Diet+Modification



# Sharon RD and ADLP- Southbound PM Peak Hour-Critical 95<sup>th</sup> percentile queue lengths

Existing



Existing+Diet



Existing+Diet+Modification



Horizon



Horizon+Diet



Horizon+Diet+Modification



# The Y : NorthWest-Bound Santa Cruz AM Peak Hour-Critical 95<sup>th</sup> percentile queue lengths

Existing



Existing+Diet



Existing+Diet+Modification



Horizon



Horizon+Diet



Horizon+Diet+Modification



# The Y : NorthWest-Bound Santa Cruz PM Peak Hour-Critical 95<sup>th</sup> percentile queue lengths

Existing



Existing+Diet



Existing+Diet+Modification



Horizon



Horizon+Diet



Horizon+Diet+Modification



# The Y : SouthEast-Bound ADLP AM Peak Hour-Critical 95<sup>th</sup> percentile queue lengths

Existing



Existing+Diet



Existing+Diet+Modification



Horizon



Horizon+Diet



Horizon+Diet+Modification





# The Y : SouthEast-Bound ADLP PM Peak Hour-Critical 95<sup>th</sup> percentile queue lengths

Existing



Existing+Diet



Existing+Diet+Modification



Horizon



Horizon+Diet



Horizon+Diet+Modification

