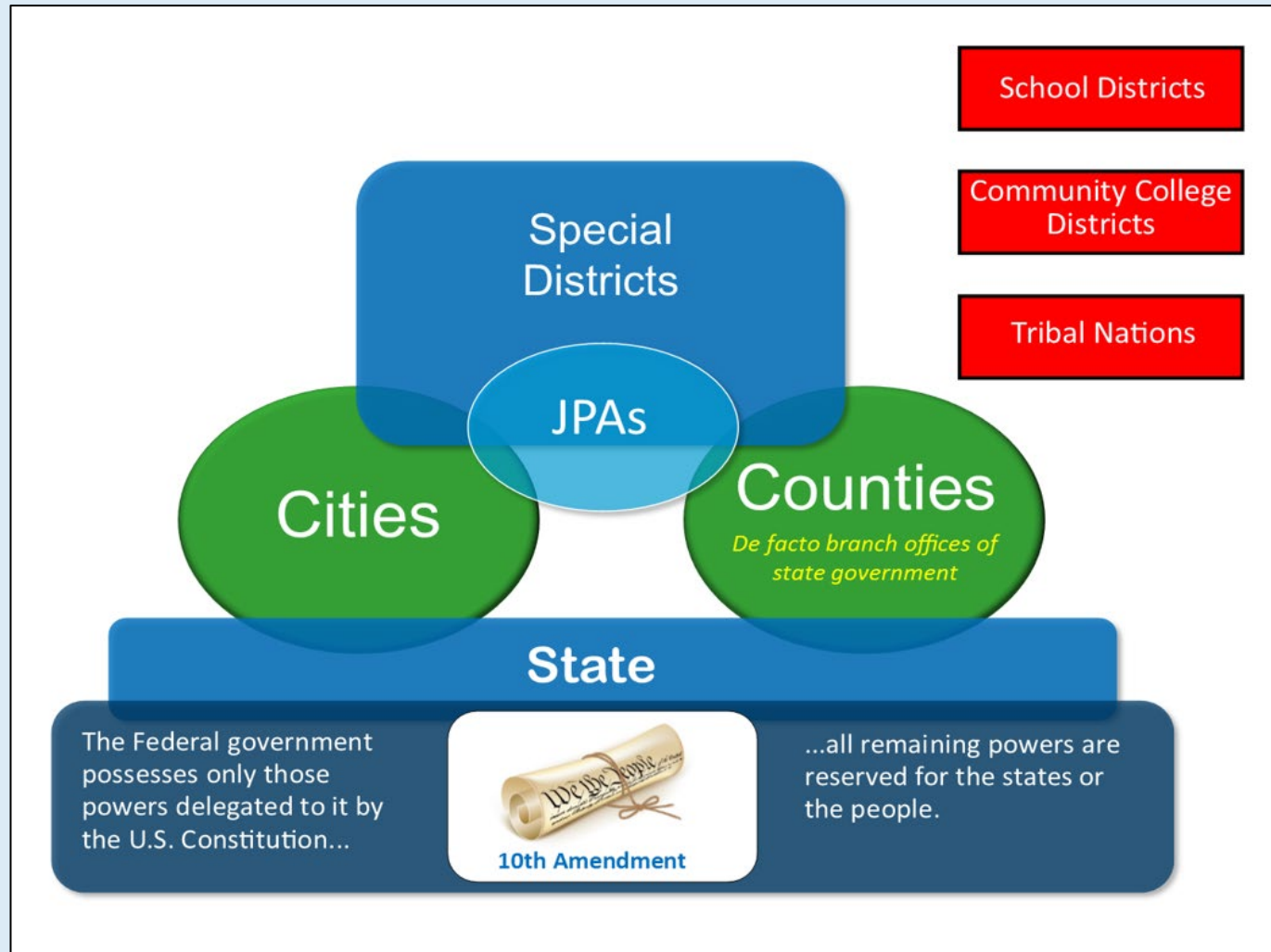




COUNTY OF SAN MATEO



Where Does the County Fit?





The Geography



57.7 MILES
OF
COASTLINE



The Jurisdictions

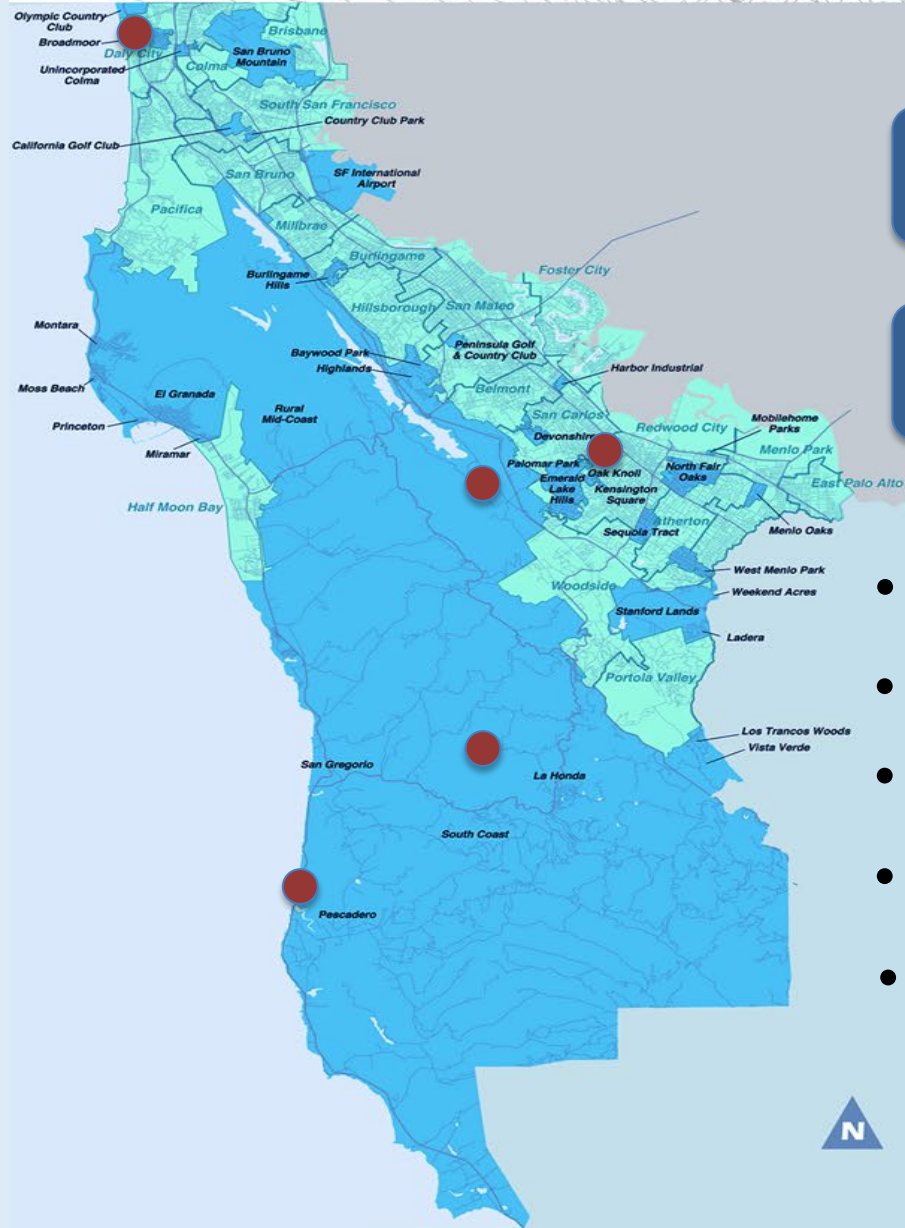


20 CITIES

BURLINGAME AVENUE



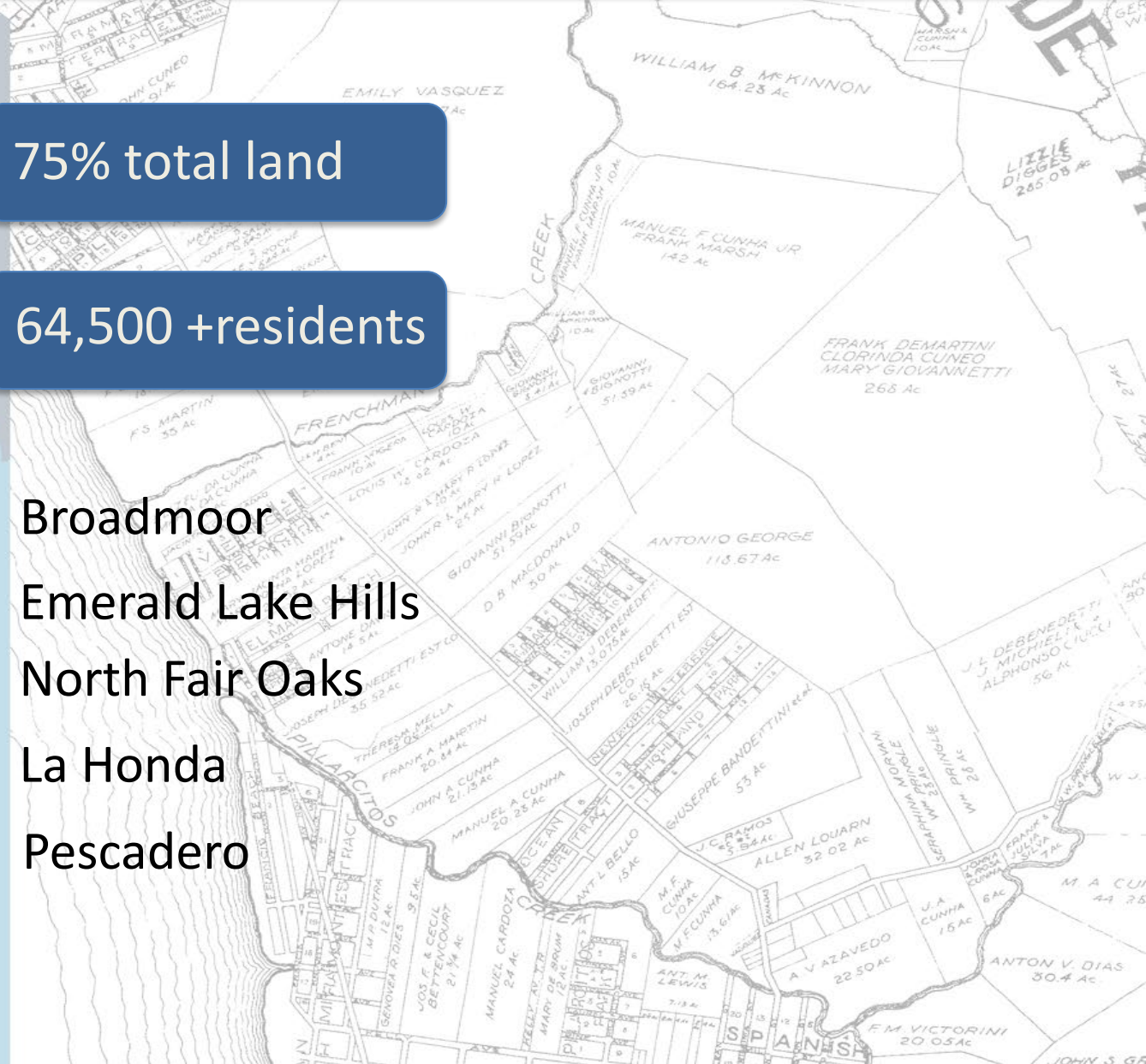
Major Unincorporated Areas



75% total land

64,500 + residents

- Broadmoor
- Emerald Lake Hills
- North Fair Oaks
- La Honda
- Pescadero





Where We Learn

183
PUBLIC SCHOOLS





Who We Are

57.1%
White

32.8%
Asian

23.8%
Hispanic

5.0% **Two**
or More
Races

2.7%
Black

764,442
PEOPLE





Prosperity

- **\$145,388 median household income**
- **\$1.7 million Median Housing Value (as of July 2024)**
- **93.5% of Households have Broadband Internet**

**ONE OF THE
WEALTHIEST
COUNTIES**





Wide Disparities Exist







County Government

Chief Responsibilities

SAFETY NET
PUBLIC SAFETY
MUNICIPAL SERVICES

21 Departments

Nearly 6,000
EMPLOYEES

\$4.23 Billion
FY 2024-25 BUDGET





Elected Officials

Board of Supervisors
(Five Members)

Assessor/County Clerk-Recorder/Chief Elections Officer

Controller

Coroner

District Attorney

Sheriff

Tax Collector/Treasurer



Other Services





Health

Health

San Mateo Medical Center

- In-home Care
- Public Health
- Basic medical/mental health care for youth and adults in custody
- Emergency medical services
- Aging/Adult Services
- Environmental Health
- Restaurant inspections/hazardous waste collection

Other Health Services

- 228 bed hospital
- 11 clinics
- Long term care
- Psychiatric services
- Mental Health Treatment
- Substance Abuse Treatment

Behavioral Health & Recovery



Public Assistance

Safety Net Services

Human Services Agency

Workforce Development

Department of Housing

Department of Child Support Services

- Social Service Programs
- Employment Services
- Foster Youth
- Child Protective Services
- Veterans Services
- Establishes and Enforces Child Support Orders

- Connects low-income job seekers with employers
- Increases access to affordable housing



SAN MATEO COUNTY

Public Safety

Sheriff

Law Enforcement
Court Security
Operate Jails

Probation Department

Probation Supervision
Operate Juvenile Hall

Safety Budget

Administration of Justice

District Attorney
Private Defenders
County Court Support

Public Safety
Communications
Fire Protection
Dept. of Emergency
Management

Emergency Response

Investigate cause
and manner of death

Coroner's Office



Serving the Unincorporated Areas

Municipal Services

Public Works

Parks

Planning and Building

Project Development Unit

Sustainability Department





Where Does the Money Come From?

\$7.7 BILLION TOTAL 2-YEAR BUDGET

Intergovernmental (state/federal)

Taxes: Property and Sales

Charges for Services

Investments, Permits, License,
Other Revenue Sources

Unspent carry-over from prior year



COUNTY OF SAN MATEO



COUNTY OF
SAN MATEO

Government
Center

↑ County
Office
Buildings
455. 500. 555

↑ Hall of
Justice
400