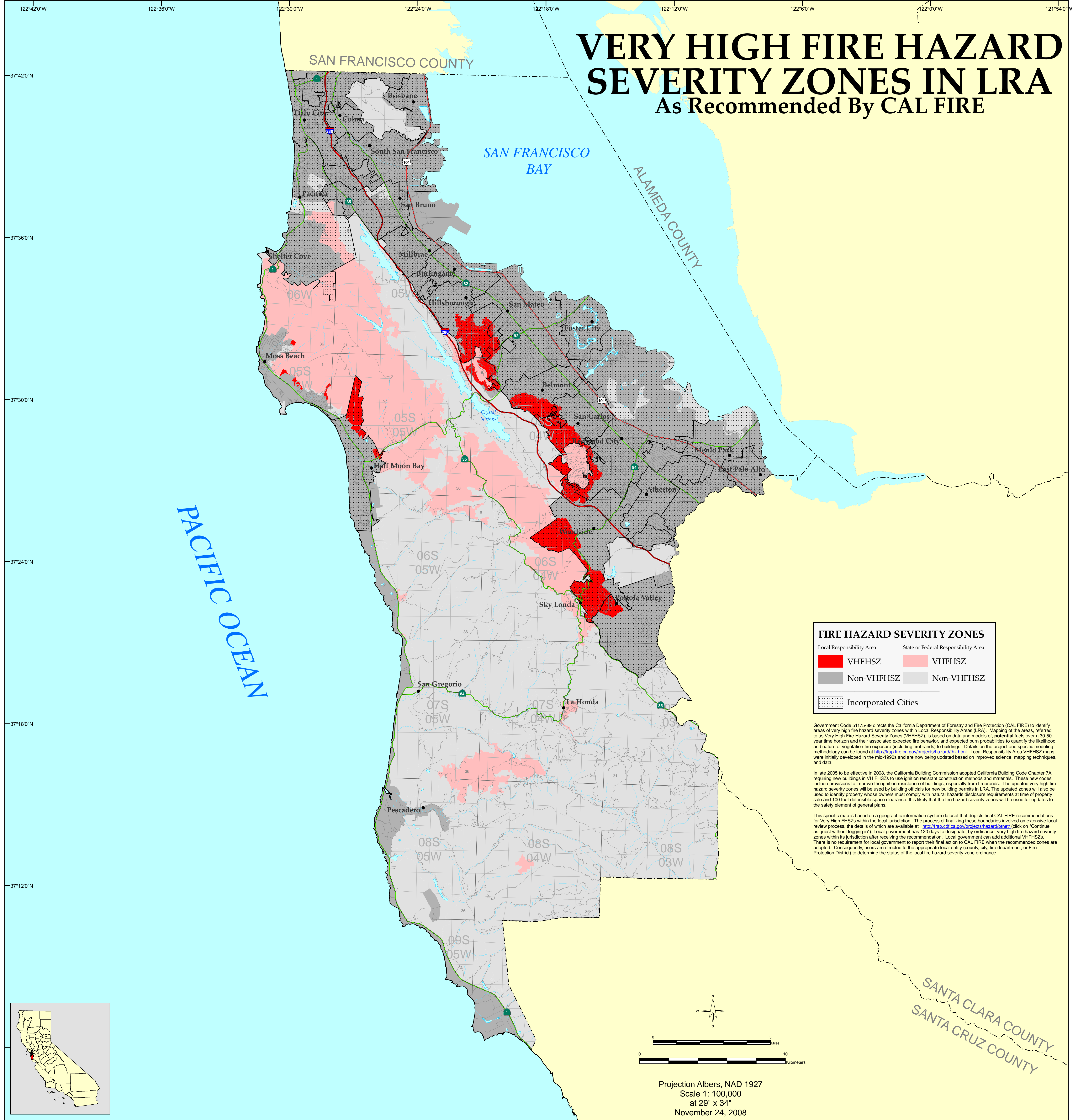


VERY HIGH FIRE HAZARD SEVERITY ZONES IN LRA As Recommended By CAL FIRE



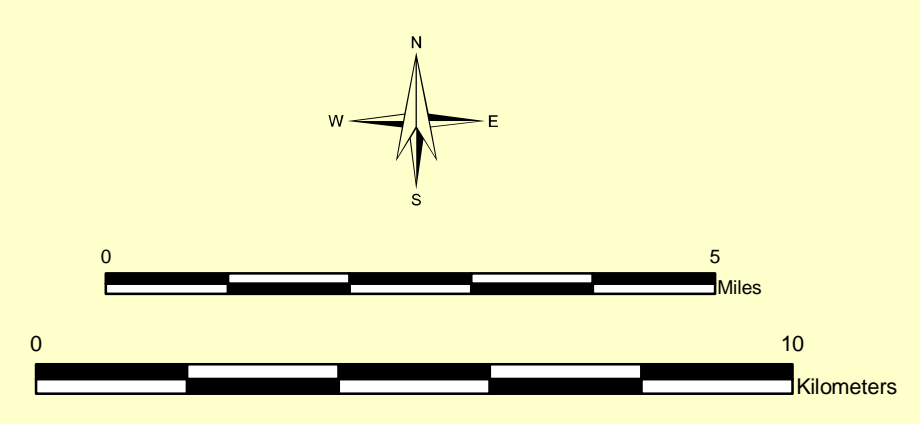
FIRE HAZARD SEVERITY ZONES

Local Responsibility Area		State or Federal Responsibility Area	
	VHFHSZ		VHFHSZ
	Non-VHFHSZ		Non-VHFHSZ
	Incorporated Cities		

Government Code 51175-89 directs the California Department of Forestry and Fire Protection (CAL FIRE) to identify areas of very high fire hazard severity zones within Local Responsibility Areas (LRA). Mapping of the areas, referred to as Very High Fire Hazard Severity Zones (VHFHSZ), is based on data and models of potential fuels over a 30-50 year time horizon and their associated expected fire behavior, and expected burn probabilities to quantify the likelihood and nature of vegetation fire exposure (including firebrands) to buildings. Details on the project and specific modeling methodology can be found at <http://frap.fire.ca.gov/projects/hazard/frp.html>. Local Responsibility Area VHFHSZ maps were initially developed in the mid-1990s and are now being updated based on improved science, mapping techniques, and data.

In late 2005 to be effective in 2008, the California Building Commission adopted California Building Code Chapter 7A requiring new buildings in VH FHSZs to use ignition resistant construction methods and materials. These new codes include provisions to improve the ignition resistance of buildings, especially from firebrands. The updated very high fire hazard severity zones will be used by building officials for new building permits in LRA. The updated zones will also be used to identify property whose owners must comply with natural hazards disclosure requirements at time of property sale and 100 foot defensible space clearance. It is likely that the fire hazard severity zones will be used for updates to the safety element of general plans.

This specific map is based on a geographic information system dataset that depicts final CAL FIRE recommendations for Very High FHSZs within the local jurisdiction. The process of finalizing these boundaries involved an extensive local review process, the details of which are available at <http://frap.cdf.ca.gov/projects/hazard/frp.html> (click on "Continue as guest without logging in"). Local government has 120 days to designate, by ordinance, very high fire hazard severity zones within its jurisdiction after receiving the recommendation. Local government can add additional VHFHSZs. There is no requirement for local government to report their final action to CAL FIRE when the recommended zones are adopted. Consequently, users are directed to the appropriate local entity (county, city, fire department, or Fire Protection District) to determine the status of the local fire hazard severity zone ordinance.



Projection Albers, NAD 1927
Scale 1: 100,000
at 29" x 34"
November 24, 2008

The State of California and the Department of Forestry and Fire Protection make no representations or warranties regarding the accuracy of data or maps. Neither the State nor the Department shall be liable under any circumstances for any direct, special, incidental, or consequential damages with respect to any claim by any user or third party on account of, or arising from, the use of data or maps.

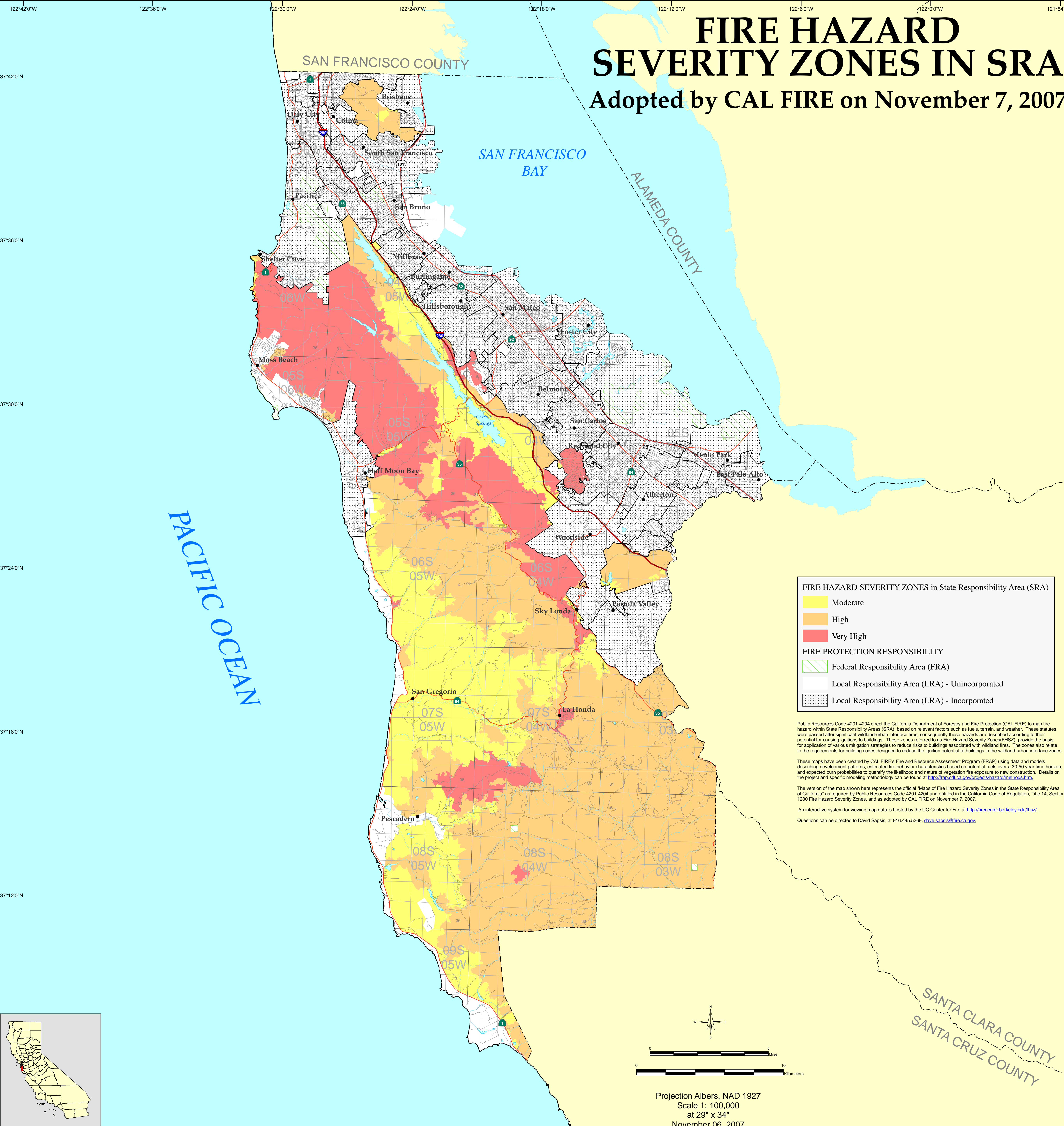
Obtain FRAP maps, data, metadata and publications on the Internet at <http://frap.cdf.ca.gov>
For more information, contact CAL FIRE-FRAP, PO Box 944246, Sacramento, CA 94244-2460, (916) 327-3939.

Arnold Schwarzenegger, Governor,
State of California
Mike Chrisman, Secretary for Resources,
The Resources Agency
Ruben Grijalva, Director,
Department of Forestry and Fire Protection

MAP ID: FHSZL_MAP
DATA SOURCES
CAL FIRE Fire Hazard Severity Zones (FHSZL06_3)
CAL FIRE State Responsibility Areas (SRA05_5)
CAL FIRE Incorporated Cities (Incorp07_3)
PLSS (1:100,000 USGS, Land Grants with CAL FIRE grid)

FIRE HAZARD SEVERITY ZONES IN SRA

Adopted by CAL FIRE on November 7, 2007



FIRE HAZARD SEVERITY ZONES in State Responsibility Area (SRA)

- Moderate
- High
- Very High

FIRE PROTECTION RESPONSIBILITY

- Federal Responsibility Area (FRA)
- Local Responsibility Area (LRA) - Unincorporated
- Local Responsibility Area (LRA) - Incorporated

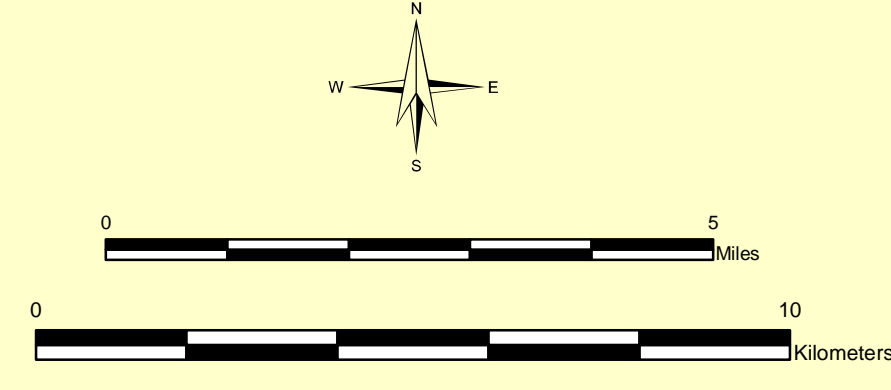
Public Resources Code 4201-4204 direct the California Department of Forestry and Fire Protection (CAL FIRE) to map fire hazard within State Responsibility Areas (SRA), based on relevant factors such as fuels, terrain, and weather. These statutes were passed after significant wildland-urban interface fires, consequently these hazards are described according to their potential for causing ignitions to buildings. These zones referred to as Fire Hazard Severity Zones (FHSZ), provide the basis for application of various mitigation strategies to reduce risks to buildings associated with wildland fires. The zones also relate to the requirements for building codes designed to reduce the ignition potential to buildings in the wildland-urban interface zones.

These maps have been created by CAL FIRE's Fire and Resource Assessment Program (FRAP) using data and models describing development patterns, estimated fire behavior characteristics based on potential fuels over a 30-50 year time horizon, and expected burn probabilities to quantify the likelihood and nature of vegetation fire exposure to new construction. Details on the project and specific modeling methodology can be found at <http://frap.cdf.ca.gov/projects/hazard/methods.htm>.

The version of the map shown here represents the official "Maps of Fire Hazard Severity Zones in the State Responsibility Area of California" as required by Public Resources Code 4201-4204 and entitled in the California Code of Regulation, Title 14, Section 1280 Fire Hazard Severity Zones, and as adopted by CAL FIRE on November 7, 2007.

An interactive system for viewing map data is hosted by the UC Center for Fire at <http://firecenter.berkeley.edu/fhszs/>.

Questions can be directed to David Sepsis, at 916.445.5369, dave.sepsis@fire.ca.gov.



Projection Albers, NAD 1927
Scale 1: 100,000
at 29" x 34"
November 06, 2007

The State of California and the Department of Forestry and Fire Protection make no representations or warranties regarding the accuracy of data or maps. Neither the State nor the Department shall be liable under any circumstances for any direct, special, incidental, or consequential damages with respect to any claim by any user or third party on account of, or arising from, the use of data or maps.

Obtain FRAP maps, data, metadata and publications on the Internet at <http://frap.cdf.ca.gov>
For more information, contact CAL FIRE-FRAP, PO Box 944246, Sacramento, CA 94244-2460, (916) 327-3939.

Arnold Schwarzenegger, Governor,
State of California
Mike Chrisman, Secretary for Resources,
The Resources Agency
Ruben Grijalva, Director,
Department of Forestry and Fire Protection

MAP ID: FHSZS_MAP
DATA SOURCES
CAL FIRE Fire Hazard Severity Zones (FHSZS06_3)
CAL FIRE State Responsibility Areas (SRA05_5)
CAL FIRE Incorporated Cities (Incorp07_3)
PLSS (1:100,000 USGS, Land Grants with CAL FIRE grid)